

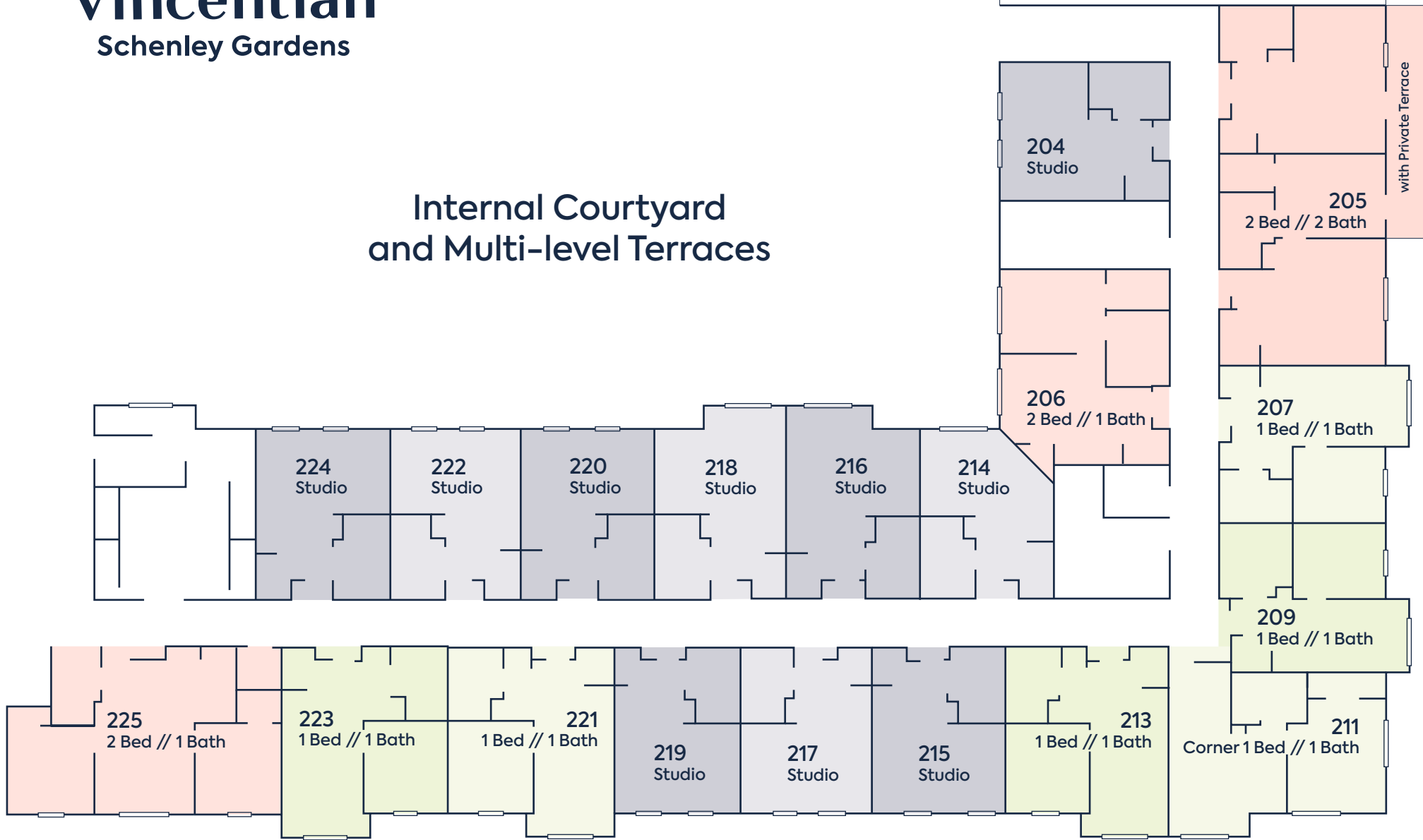


vincentian

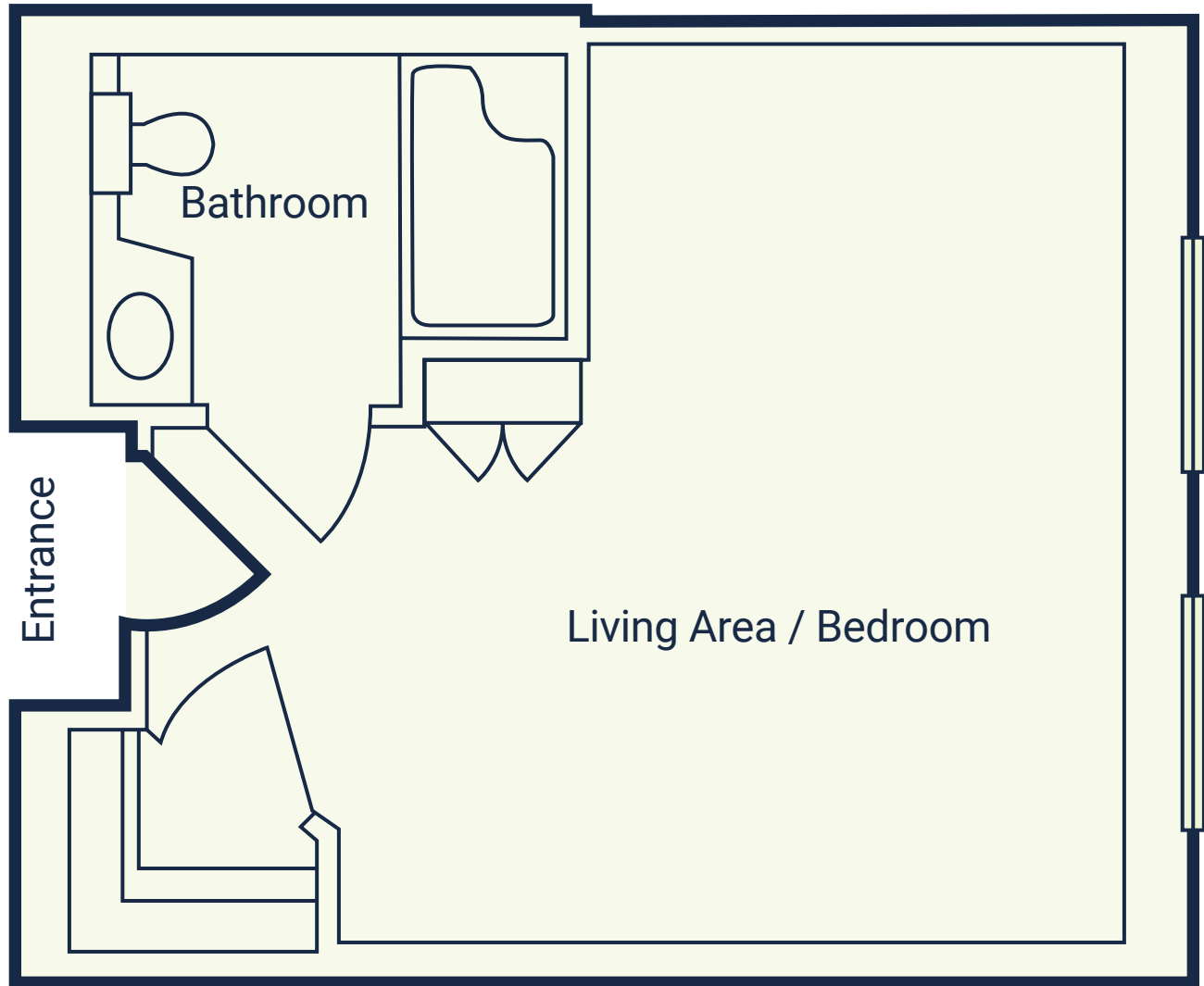
Schenley Gardens

Internal Courtyard and Multi-level Terraces

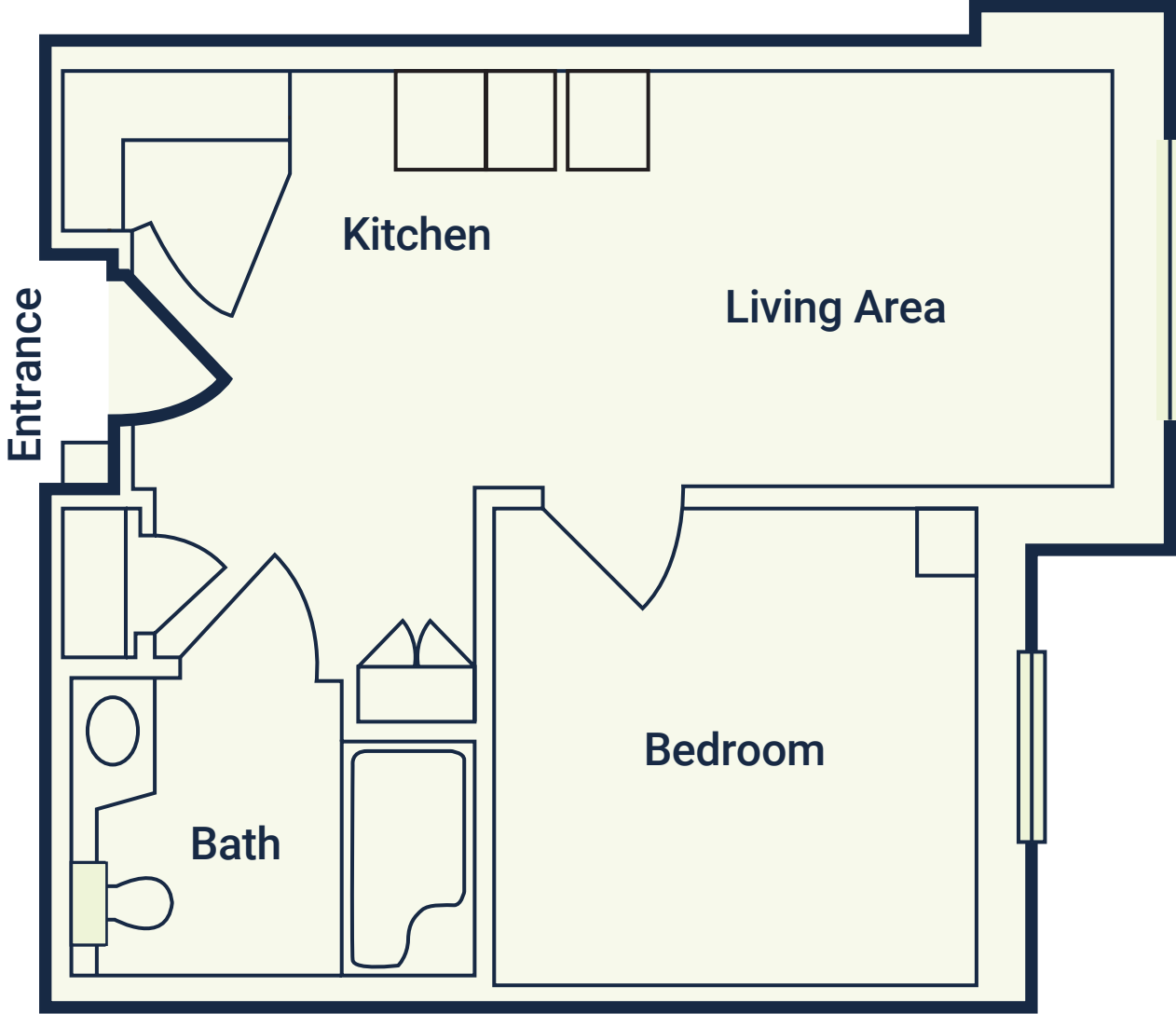
2nd Floor Layout



Bigelow Blvd.

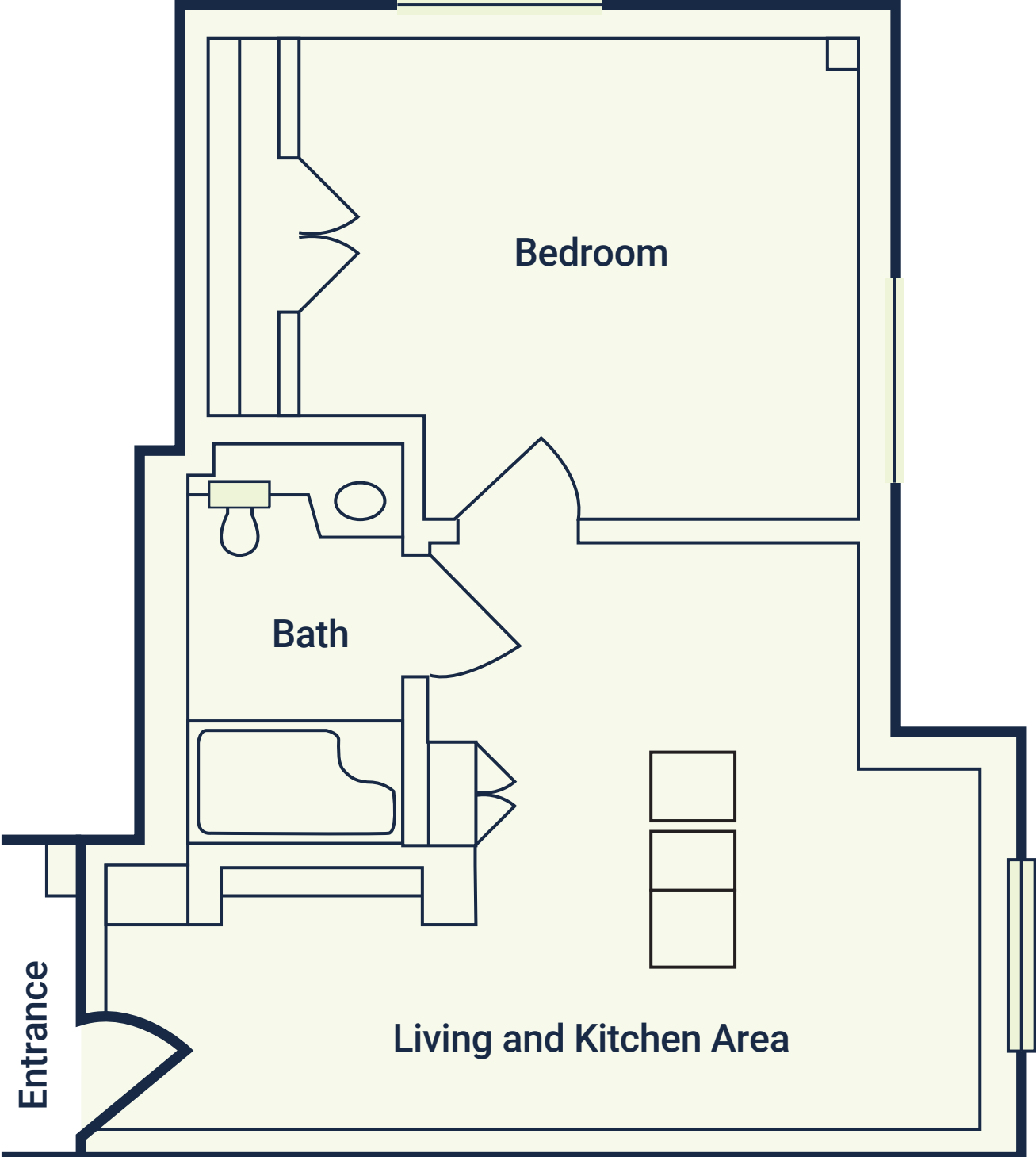


1 Bedroom, 1 Bathroom // 450 sq ft



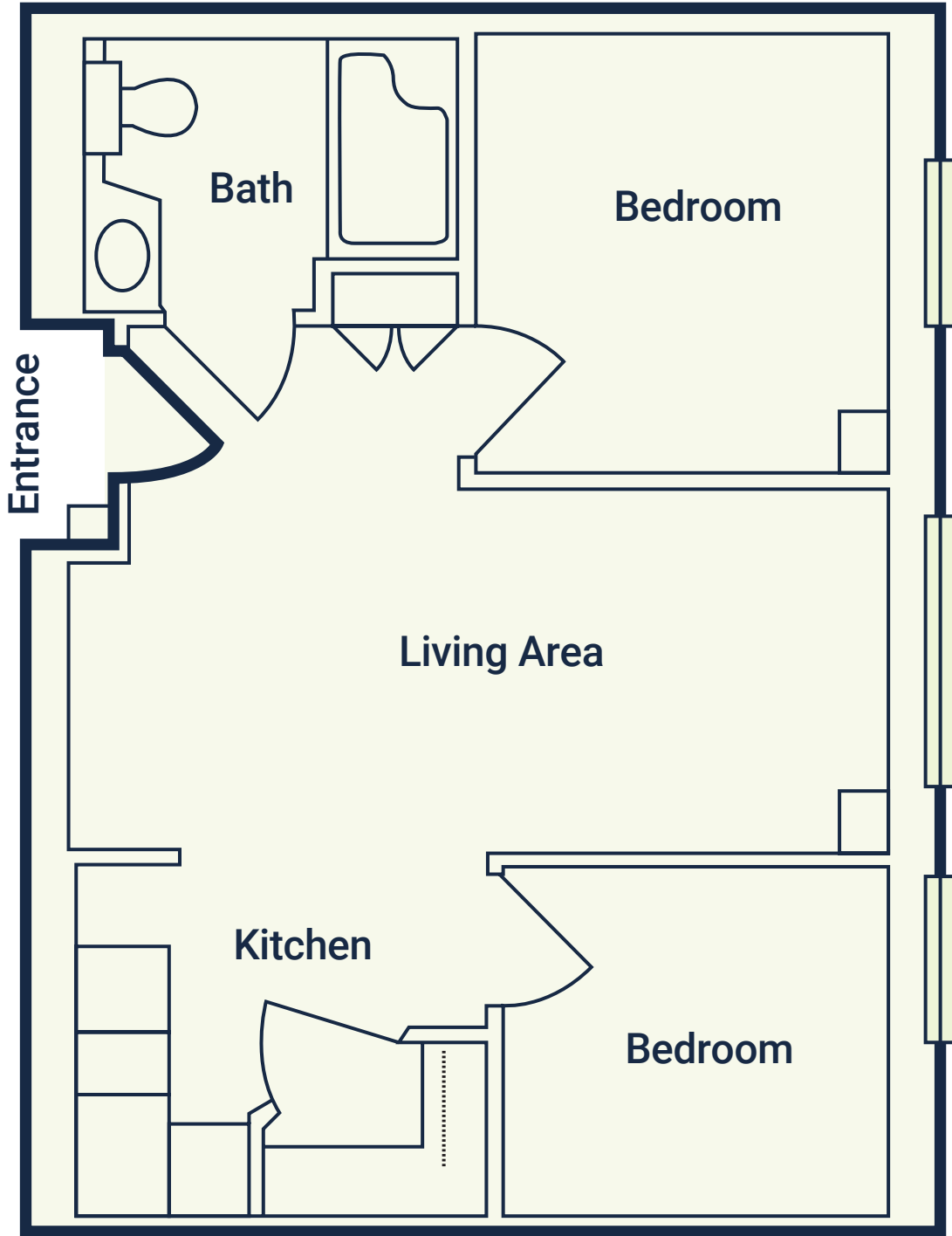
Floor plan sizes may vary and other plans are available.

1 Bedroom, 1 Bathroom // Corner



Floor plan sizes may vary and other plans are available.

2 Bedroom, 1 Bathroom // 620 sq ft

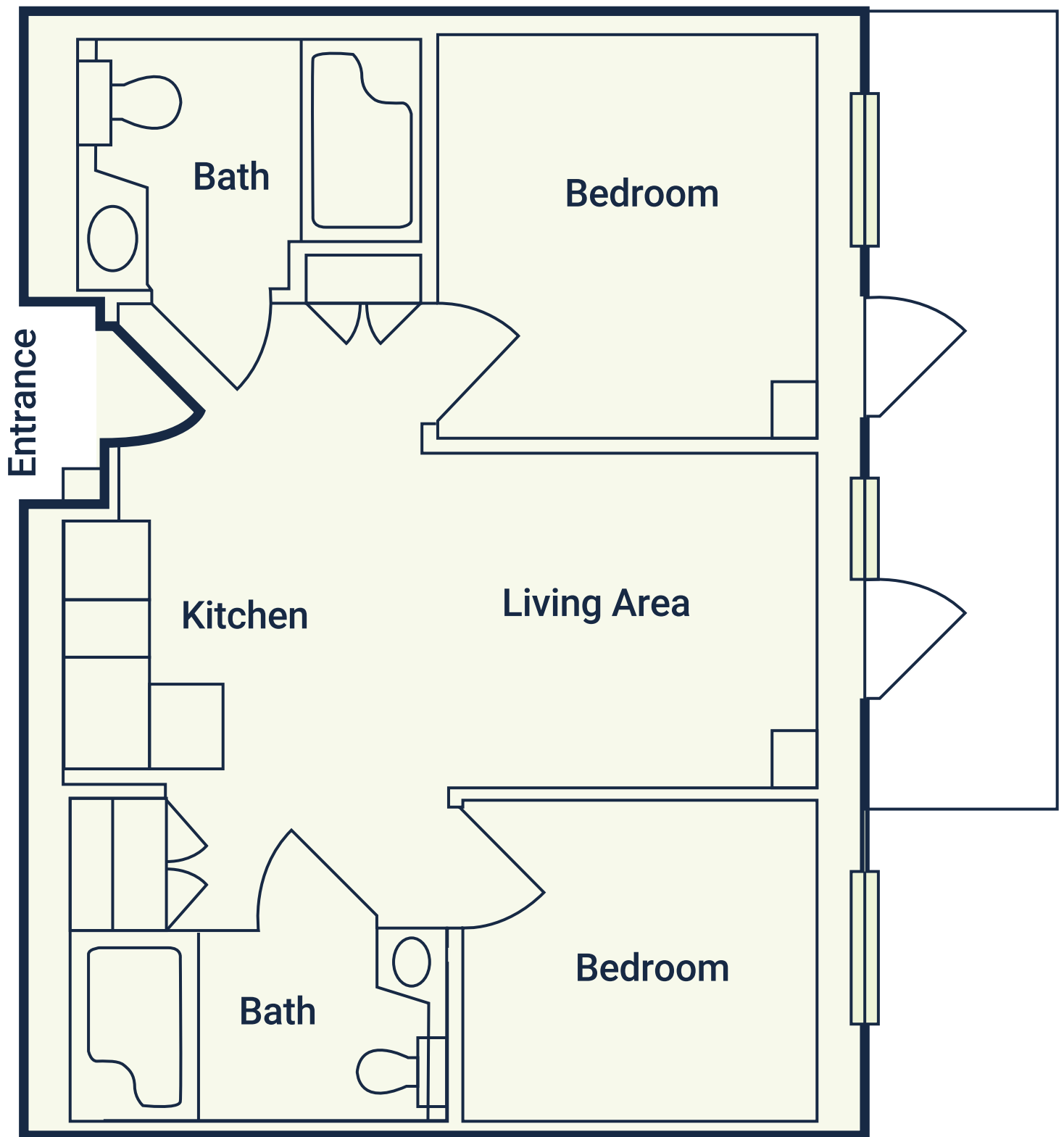


Floor plan sizes may vary and other plans are available.

2 Bedroom, 2 Bathroom, Private Terrace



vincentian



Floor plan sizes may vary and other plans are available.

Discounted Rent Structure

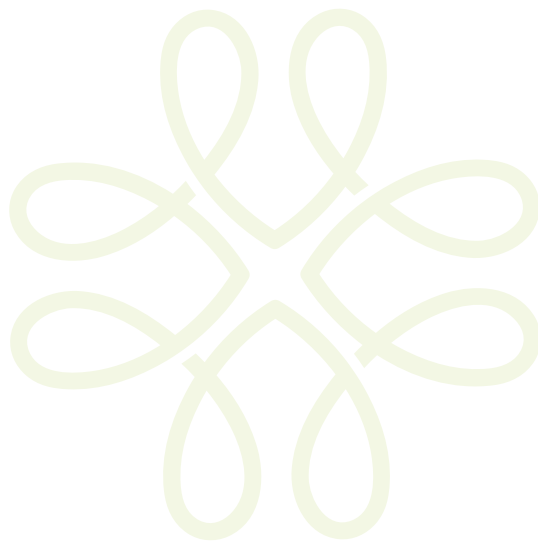
Vincentian Schenley Gardens Student in Residence

	1 Person	2 Persons	3 Persons	4 Persons
Studio	\$700	—	—	—
One Bedroom, 1 Bathroom	\$1,200	\$600	—	—
One Bedroom, 1 Bathroom Corner	\$1,300	\$650	—	—
Two Bedroom, 1 Bathroom	\$1,400	\$700	\$467	—
Two Bedroom, 2 Bathroom with Private Terrace	\$1,800	\$900	\$600	\$450

Choosing Your Roommate(s)

It is the students' responsibility to find roommates who are enrolled as Chatham University Health Sciences Graduate Students and are approved by Vincentian to move in if they wish to split the cost of an apartment at Vincentian Schenley Gardens. Studio apartments can accommodate one student. One-bedroom apartments can accommodate up to two students. Two-bedroom apartments can accommodate up to three or four students, based on configuration.

If any roommate breaks their lease and moves out, it is the responsibility of the remaining roommate(s) to pay the full monthly rent for the apartment.



Vincentian Schenley Gardens Photos

